

Specialty Chemical Plant Liquidation - large stainless steel shell and tube heat exchangers - ranging from 500 sq. ft. to 13,500 sq. ft.; fin-fan heat exchangers; stainless steel jacketed pressure tanks - ranging from 4,000 to 15,000 gallons; (3) late model Carrier chillers, plus more process equipment.

Chillers

5044 Used 569 Ton Carrier Chiller, Model 19XL5555569CR, S/N: 3598J58459. Rated 300 PSI, 250 HP, 2300V/3/60. R-134A refrigerant. Built 1999. (Qty. 3 Available)



Compressors

5055 Used 122 SCFM Corken Gas Compressor, Inlet Pressure: 100 PSI @ 80 deg F; Outlet: 250 PSI @ 120 deg F. 15HP, 460V-3PH-60HZ, TEFC, V-Belt driven. Air cooled Compressor cylinder. Model # D491AM9FBANSNN, S/N: VN60767198, Built 1977, Previous use: Nitrogen.



Cooling Towers

5056 Tower Tech Cooling Tower - 5 Bays, 7.5 HP

Fin-Fan Exchangers

5012 Used 3909 Sq Ft Fin Fan Heat Exchanger, rated 75PSI @ 300 deg F. (394) 1" 304L-SS tubes x 38' L. Cabinet Dims: 38' L x 14' W x 12' 11" H. (2) 30 HP, 460/3/60, 1800 RPM, TEFC Fan Motors, 26,3 MBTU/HR, Mfg by ESEX, S/N:76A480-A1.

5016 Used 2038 Sq Ft Fin Fan Heat Exchanger, rated 150 PSI @ 300 deg F. Cabinet Dims: 28' L x 11.5' W x 15' 3" H. (2) 20 HP, 460/3/60, 1800 RPM, TEFC Fan Motors, 9,486 MBTU/HR, Mfg by Marley, S/N:11-129-76-1-01.

Heat Exchangers, Reboilers and Condensers

- 5013** 13,397 Sq. Ft. SS Miller Exchangers, Horizontal Exchanger, 50/75#
- 5033** 5,969 Sq. Ft. SS Killebrew Engineering, Vertical Exchanger, 75/75#
- 5034** 5,969 Sq. Ft. SS Killebrew Engineering, Vertical Exchanger, 75/75#
- 5032** 5,115 Sq. Ft. SS Killebrew Engineering, Vertical Exchanger, 180/180
- 5014** 4,830 Sq. Ft. SS Killebrew Engineering, Horizontal Exchanger, 75/75#
- 5015** 4,830 Sq. Ft. SS Killebrew Engineering, Horizontal Exchanger, 75/75#
- 4925** 2,870 Sq. Ft. CS Hughes, Horizontal Exchanger, 515/50#
- 5042** 2,513 Sq. Ft. SS Killebrew Engineering, Vertical Exchanger, 100/100#
- 5035** 2,358 Sq. Ft. SS Miller Exchangers, Vertical Exchanger, 500&15/200#
- 5028** 1,642 Sq. Ft. SS Killebrew Engineering, Vertical Exchanger, 175/180#
- 5010** 1,376 Sq. Ft. SS Ohmstede, Horizontal Exchanger, 75/75#
- 5003** 906 Sq. Ft. SS Beaumont Machine Works, Horizontal Exchanger, 151/151
- 5030** 854 Sq. Ft. SS Killebrew Engineering, Horizontal Exchanger, 200/180#
- 5031** 854 Sq. Ft. SS Killebrew Engineering, Horizontal Exchanger, 200/180#
- 5021** 730 Sq. Ft. SS Ohmstede Inc, Horizontal Exchanger, 225/150#
- 5029** 490 Sq. Ft. SS Killebrew Engineering, Horizontal Exchanger 150/150#
- 5041** 238 Sq. Ft. SS Ohmstede, Inc. Horizontal Exchanger, 168/150#
- 5036** 204 Sq. Ft. SS Killebrew Engineering, Horizontal Exchanger, 175/300#
- 5022** 201 Sq. Ft. SS Killebrew Engineering, Vertical Exchanger, 150/150#
- 5037** 131.9 Sq. Ft. SS Killebrew Engineering, Horizontal Exchanger, 300/300#
- 5038** 131.9 Sq. Ft. SS Killebrew Engineering, Horizontal Exchanger, 300/300#
- 5005** 72 Sq. Ft. SS Killebrew Engineering, Horizontal Exchanger, 150/200#



**High Quality Process Equipment.
Select from Our Recent Equipment
Acquisitions.**

Pressure Vessels – Stainless Steel



5004 15,700 Gallon vertical 304L-SS Tank. Internal Rated 50 PSI @ 225 deg F. Dished heads. 11' dia x 20' T/T (OAL - 27'). Shell thickness: 0.25", Head thickness: 0.375". Skirt mounted. Built by James Machine Works, 1996, S/N: 6673, NB# 2317. Approx Wt: 20,000 lbs. Previous use: Ketazine Col. Feed Tank.

5026 13,600 Gallon vertical 304L-SS Tank. Internal Rated 15 PSI @ 304 deg F. Dished heads. 11' dia x 17' T/T (OAL - 25'). Shell thickness: 0.25". Mfg by Best Mfg Co, 1977, S/N: A-2034, U-Stamp. Previous Use: Distillate Receiver. Approx Wt: 17,950 lbs.



5000 11,325 Gal Vertical 304L-SS Tank, 75#, 10' dia x 15' 9" T/T (Qty. 2)

5002 8,950 Gal Vertical 304L-SS Tank, 55#

5006 8,750 Gal Vertical Dixie Steel & Supply 304L-SS Tank, 50 PSI, 10' dia x 13' 9" T/T

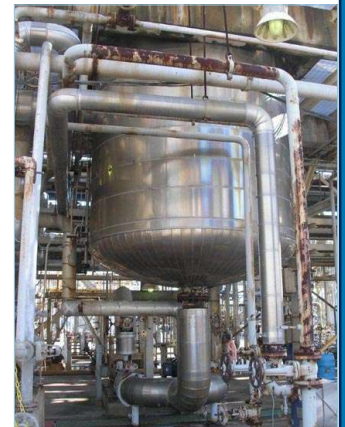
5007 8,750 Gallon vertical 304L-SS Tank. Internal Rated 50 PSI @ 225 deg F. Dished heads. 10' dia x 13' 9" T/T (OAL - 18'). Shell thickness: 0.25". Lug mounts. NB Stamped. Built by Dixie Steel & Supply, S/N: 3958H. Previous Use: Product Receiver Tank. Approx Wt: 11,600 lbs.



- 5020** 7,750 Gal Vertical Best Mfg Co 304L-SS Tank, 202#, 7' dia x 12' T/T
- 5023** 4,800 Gal Vertical 304L-SS Tank, 50#, 7' dia x 14' T/T
- 5019** 4,100 Gal Vertical Best Mfg Co 304L-SS Tank, 50#, 7' dia x 12' T/T
- 5043** 2,450 Gal Vertical Best Mfg Co 304L-SS Tank, 100#, 5' dia x 15' T/T
- 5025** 1,900 Gal Vertical Best Mfg Co 304L-SS Tank, 50#, 5' dia x 12' T/T
- 5047** 1,600 Gal Horizontal Best Mfg Co 304L-SS Pressure Tank, 50#, 5' dia x 10' T/T
- 5011** 540 Gal Horizontal St. Mary Iron Works 304L-SS Tank, 15#
- 5027** 105 Gal Vertical Ohmstede Inc 304L-SS Tank, 200#
- 5008** 100 Gal Vertical 304L-SS Tank, 15#
- 5009** 100 Gal Vertical 304L-SS Tank, 15#
- 5024** 10 Gal Vertical Best Mfg. Co. 304L-SS Tank, 200#

Pressure Vessels – Carbon Steel

5017 8,700 Gallon vertical Carbon Steel Tank. Internal Rated 102 PSI @ 225 deg F. Dished heads. 10' dia x 13' T/T (OAL - 18'). Shell thickness: 0.5"; Heads: 0.875. Lug mounts. Mfg by Mississippi Tank Co, 1977, S/N: 79846, NB# 7001. Previous Use: Aqua Ammonia Tank. Approx Wt: 11,500 lbs.



- 5054** 5,990 Gal Horizontal Carbon Steel Pressure Tank, 314#
- 5018** 4,100 Gal Vertical Carbon Steel Tank, 175#
- 5048** 1,378 Gal Vertical Carbon Steel Tank, 50#
- 5040** 500 Gal Vertical Carbon Steel Tank, 180#
- 5039** 40 Gal Vertical Carbon Steel Tank, 775#



**View Our Complete
Inventory Online!**
Over 40 categories of used
and unused process
equipment in stock.