


Just Purchased - Specialty Chemical Coatings Plant Liquidation - Hastelloy, Glass Lined, and Stainless Steel Process Equipment INCLUDES: 5 Sq. M 316L SS Cogeim Filter Dryer; 4 Sq. M 316L SS Rosenmund Filter Dryer; 2.5 Sq. M Hastelloy Rosenmund Filter Dryer; 0.3 Sq. M Sparkler Nutsche Filter; 2000 Gal Hastelloy Reactor; 50 Gal Hastelloy Reactor; (2) High Pressure 1000 Gal Glass Lined Reactors; York CO₂ / R22 Cascade System Refrigeration Unit; plus dozens of stainless steel exchangers, pressure vessels and more.

Chillers

- 6420 450 TON TRANE CENTRAVAC CHILLER, MODEL CVHE 450
- 6421 450 TON TRANE CENTRAVAC CHILLER, MODEL CVHE 450
- 6302  150 TON CO₂ / R22 CASCADE SYSTEM YORK REFRIGERATION UNIT
- 6300 FRICK MODEL #RWBII134E CHILLER WITH ROTARY SCREW COMPRESSOR
- 6301 FRICK MODEL #RWBII134E CHILLER WITH ROTARY SCREW COMPRESSOR
- 6397 FRICK TWO STAGE RSS DI-LIMOENE CHILLER



Columns - Glass Lined, Stainless Steel and PTFE Lined

- 6504 30" X 10' DEDIETRICH GLASS LINED COLUMN, 105# (UNUSED)
- 6511 26" CARBONE OF AMERICA PTFE / ARMYLOR LINED COLUMN, 37#
- 6502 23" X 10' DEDIETRICH GLASS LINED COLUMN, 75# (UNUSED)
- 6415 20" X 260" BEDARCO-NOOTER SULZER PACKED STRIPPING COLUMN, HASTELLOY C276, 45#
- 6304 20" X 22' ALABAMA HEAT EXCHANGER PACKED COLUMN, 316L S/S, 75#
- 6356 18" X 11' DEDIETRICH GLASS LINED COLUMN, 100#
- 6357 12" X 30' IPI PACKED COLUMN, 316L S/S, 75#
- 6503  12" X 10' DEDIETRICH GLASS LINED COLUMN, 150# (UNUSED)



Filters - Filter Dryers

- 6371 5 SQ METER COGEIM NUTSCHE FILTER DRYER, 316L S/S
- 6372 4 SQ METER ROSENMUND NUTSCHE FILTER DRYER, 316L S/S
- 6366 2.5 SQ METER ROSENMUND NUTSCHE FILTER DRYER, HASTELLOY C-276
- 6385 0.3 SQ METER SPARKLER NUTSCHE FILTER DRYER, 316 S/S

Heat Exchangers - Block Type (Compabloc)

- 6417 436 SQ FT ALFA LAVAL COMPABLOC EXCHANGER, HASTELLOY, 100/100#
- 6419 352.9 SQ FT ALFA LAVAL COMPABLOC EXCHANGER, HASTELLOY, 300/300#
- 6418 151 SQ FT ALFA LAVAL COMPABLOC EXCHANGER, HASTELLOY, 100/100#
- 6343 69.7 SQ FT ALFA LAVAL (KARBATE VICARB) COMPABLOC EXCHANGER, HASTELLOY, 300/150#
- 6333 69.7 SQ FT ALFA LAVAL (KARBATE VICARB) COMPABLOC EXCHANGER, HASTELLOY, 150/150#
- 6334 69.7 SQ FT ALFA LAVAL (KARBATE VICARB) COMPABLOC EXCHANGER, HASTELLOY, 150/150#
- 6337 69.7 SQ FT ALFA LAVAL (KARBATE VICARB) COMPABLOC EXCHANGER, HASTELLOY, 150/150#
- 6338 69.7 SQ FT ALFA LAVAL (KARBATE VICARB) COMPABLOC EXCHANGER, HASTELLOY, 150/150#
- 6339 69.7 SQ FT ALFA LAVAL (KARBATE VICARB) COMPABLOC EXCHANGER, HASTELLOY, 150/150#
- 6340 69.7 SQ FT ALFA LAVAL (KARBATE VICARB) COMPABLOC EXCHANGER, HASTELLOY, 150/150#
- 6364 69.7 SQ FT ALFA LAVAL (KARBATE VICARB) COMPABLOC EXCHANGER, HASTELLOY, 150/150#
- 6365 16.7 SQ FT ALFA LAVAL (KARBATE VICARB) COMPABLOC EXCHANGER, HASTELLOY, 150/150#
- 6367 69.7 SQ FT ALFA LAVAL (KARBATE VICARB) COMPABLOC EXCHANGER, HASTELLOY, 150/150#
- 6369 69.7 SQ FT ALFA LAVAL (KARBATE VICARB) COMPABLOC EXCHANGER, HASTELLOY, 150/150#
- 6316 65.7 SQ FT ALFA LAVAL (KARBATE VICARB) COMPABLOC EXCHANGER, HASTELLOY, 100/100#

Heat Exchangers and Condensers

- 6306 200 SQ FT ALABAMA HEAT EXCHANGER, 316L S/S, 75/125#
- 6510 200 SQ FT DOYLE & ROTH, 316L S/S, 100/100#
- 6326 137 SQ FT ALABAMA HEAT EXCHANGER, 316L S/S, 100/125#
- 6361 93 SQ FT ALABAMA HEAT EXCHANGER, 316L S/S, 75/125#
- 6375 95 SQ FT SOUTHERN HEAT EXCHANGER CORP, HASTELLOY, 150/100#
- 6309 90 SQ FT MONTICELLO TANK INC, 316L S/S, 75/100#
- 6349 61.1 SQ FT ALABAMA HEAT EXCHANGER, 316L S/S, 125/125#
- 6359 61 SQ FT DOYLE & ROTH, 316L S/S, 100/100#
- 6318 41 SQ FT MONTICELLO TANK INC, 316L S/S, 100/100#
- 6379 30 SQ FT MONTICELLO, 316L S/S, 150/150#
- 6311 30 SQ FT MONTICELLO, 316L S/S, 100/100#
- 6413 29 SQ FT ALABAMA HEAT EXCHANGER, 316L S/S, 100/45#
- 6380 28 SQ FT MONTICELLO, 316L S/S, 100/100#
- 6305 25 SQ FT ALABAMA HEAT EXCHANGER, 316L S/S, 75/125#
- 6373 19 SQ FT DOYLE & ROTH, 316L S/S, 100/150#
- 6314 18 SQ FT ALLYN AMERICA, 316L S/S, 150/150#
- 6323 12.2 SQ FT ALABAMA HEAT EXCHANGER, 316L S/S, 75/125#
- 6348 12.2 SQ FT ALABAMA HEAT EXCHANGER, 316L S/S, 75/125#

**High Quality Process Equipment.
Select from Our Recent Equipment
Acquisitions.**

Pressure Vessels – Carbon Steel

- 6398 12500 GAL BEAIRD INDUSTRIES HORIZONTAL VESSEL, CARBON STEEL, 250 #
- 6388 8400 GAL COASTAL INDUSTRIAL FABRICATORS HORIZONTAL VESSEL, CARBON STEEL, 75 #

Pressure Vessels – Stainless Steel

- 6303 3060 GAL ALABAMA HEAT EXCHANGER VERTICAL VESSEL, 316L S/S, 75#
- 6391 2875 GAL ALABAMA HEAT EXCHANGER VERTICAL MIXING VESSEL, 316L S/S, 75#
- 6381 2000 GAL KNIGHTS PIPING VERTICAL VESSEL, 316L S/S, 50#
- 6389 2000 GAL KNIGHTS PIPING INC VERTICAL VESSEL, 316 S/S, 50#
- 6382 1740 GAL INDUSTRIAL PIPING VERTICAL VESSEL, 316L S/S, 75#
- 6325 1700 GAL INDUSTRIAL PIPING VERTICAL VESSEL, 316L S/S, 59#
- 6387 1266 GAL TESECON INC VERTICAL VESSEL, 316L S/S, 75#
- 6324 1250 GAL INDUSTRIAL PIPING VERTICAL VESSEL, 316L S/S, 62#
- 6383 1193 GAL ALABAMA HEAT EXCHANGER VERTICAL VESSEL, 316L S/S, 75#
- 6386 1193 GAL ALABAMA HEAT EXCHANGER VERTICAL VESSEL, 316L S/S, 75#
- 6355 1160 GAL INDUSTRIAL PIPING VERTICAL VESSEL, 316L S/S, 53#



6307


- 6358 1008 GAL INDUSTRIAL PIPING VERTICAL VESSEL, 316L S/S, 64#
- 6328 810 GAL ALABAMA HEAT EXCHANGER VERTICAL VESSEL, 316L S/S, 75#
- 6321 800 GAL INDUSTRIAL PIPING VERTICAL VESSEL, 316L S/S, 53#
- 6322 800 GAL INDUSTRIAL PIPING VERTICAL VESSEL, 316L S/S, 47#

- 6330 470 GAL INDUSTRIAL PIPING VERTICAL VESSEL, 316L S/S, 600#
- 6327 113 GAL ALABAMA HEAT EXCHANGER VERTICAL VESSEL, 316L S/S, 100#
- 6319 59 GAL KNIGHTS PIPING INC VERTICAL VESSEL, 316L S/S, 100#

Pumps – Vacuum Pump Systems

- 6307  178 CFM Busch Dry Screw Vacuum Pump, Model NC-0250
- 6310 113 CFM Rietschle Rotary Vane Vacuum Pump, Type BWZ162-15
- 6341 113 CFM Rietschle Rotary Vane Vacuum Pump, Type BWZ162-15
- 6342 113 CFM Rietschle Rotary Vane Vacuum Pump, Type BWZ162-15
- 6368 113 CFM Rietschle Rotary Vane Vacuum Pump, Type BWZ162-15
- 6363 110 CFM Rietschle Rotary Vane Vacuum Pump
- 6370 96 CFM SIHI Stainless Steel Liquid Ring Vacuum Pump
- 6353 96 CFM SIHI Stainless Steel Liquid Ring Vacuum Pump
- 6403 Siemens Vacuum Pump, Type 2BE1505-1ZY4Z

Reactors - Glass Lined

- 6351 1000 GAL PFAUDLER GLASS LINED REACTOR, 300/450 #
- 6377  1000 GAL DEDIETRICH GLASS LINED REACTOR, 130/450 #
- 6374 1000 GAL DEDIETRICH GLASS LINED REACTOR, 100/90 #
- 6399 750 GAL PFAUDLER GLASS LINED REACTOR, 100/90 #
- 6345 500 GAL PFAUDLER GLASS LINED REACTOR, 100/100 #
- 6346 300 GAL PFAUDLER GLASS LINED REACTOR, 300/90 #
- 6344 200 GAL PFAUDLER GLASS LINED REACTOR, 100/90 #




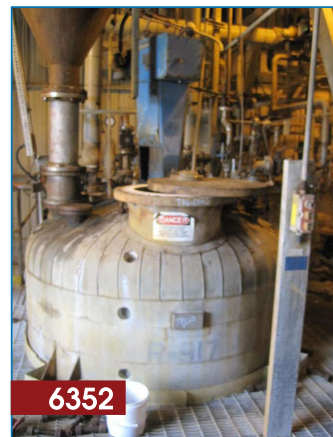
6377

Reactors – Hastelloy

- 6390 2000 GAL SOVEREIGN FABRICATORS REACTOR, HASTELLOY C-276, 75/100#
- 6362 50 GAL PFAUDLER REACTOR, HASTELLOY C22, 100/90#

Reactors – Stainless Steel

- 6350 1828 GAL BUFFALO TECH REACTOR, 316L S/S, 100/150#
- 6352  1800 GAL INDUSTRIAL PIPING REACTOR, 316L S/S, 111/90#
- 6384 1286 GAL WARD TANK REACTOR, 316L S/S, 75/300#
- 6406 1000 GAL INDUSTRIAL ALLOY FABRICATORS REACTOR, 304L S/S, 60/150#
- 6378 530 GAL INDUSTRIAL PIPING REACTOR, 316L S/S, 76/90#





6352

Tanks – Glass Lined

- 6392 500 GAL DEDIETRICH GLASS LINED TANK, 89/FV#

Tanks – Stainless Steel

- 6515  32000 GAL API 620 ATMORE TANK VERTICAL STORAGE TANK, 304 SS
- 6400  28825 GAL DAVIS FABRICATING VERTICAL SILO, 304 SS, CONE BOTTOM
- 6513 20000 GAL API 620 ATMORE TANK VERTICAL STORAGE TANK, 304 SS
- 6514 20000 GAL API 620 ATMORE TANK VERTICAL STORAGE TANK, 304 SS
- 6395 4435 GAL DIXIE STEEL VERTICAL STORAGE TANK, 304 SS, FLAT TOP AND BOTTOM
- 6396 3315 GAL MITTERNIGHT BOILER WORKS VERTICAL STORAGE TANK, 304 SS, DISHED HEADS



6515



6400



**View Our Complete
Inventory Online!**
Over 40 categories of used
and unused process
equipment in stock.