



Call or email us today!
(732) 442-6990
sales@phxequip.com



[HOME](#)

[EQUIPMENT](#)

[PLANTS](#)

[NEWS](#)

[ABOUT US](#)

[CONTACT US](#)

Ideal Opportunity to Acquire Tank Farm!

Tank Farm available for immediate relocation! Includes (13) 45,000 Gallon 304L Stainless Steel Horizontal Tanks, Rated F.V & 100 psi @ 250 °F; (1) 15,000 Gallon 304L Stainless Steel Horizontal Tanks, Rated F.V & 100 psi @ 250 °F; (2) 7,000 Gallon 304L Stainless Steel Horizontal Tanks, Rated F.V & 100 psi @ 250 °F; (1) 3,000 304L Stainless Steel Horizontal Tanks, Rated F.V & 100 psi @ 250 °F.

Tank Farm includes large quantity of stainless steel pipe, stainless steel valves (Durco-Gate; Relief Valves & Fischer Control), Magnatex Magnetic Drive Pumps, and galvanized steel catwalk/platforms. This would be ideal for someone building a storage or blending facility.

Below please find photos and details of available tanks from this site liquidation.

Best Regards,

The Phoenix Equipment Sales Team

(732) 442-6990

sales@phxequip.com

[Search Our Inventory](#)

Who is Phoenix Equipment?

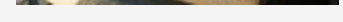
We are a leading global supplier of quality used plants and process equipment to the chemical, pharmaceutical, petrochemical, food, polymer, fertilizer, refinery, and associated industries.



[Stainless Steel Tanks for Sale](#)

45,000 Gallon Horizontal S/S Pressure Tank (Qty. 13) - #3270

45,000 Gallon Struthers Ind. 304L Stainless Steel Horizontal Storage Tank. Max. Pressure F.V. & 100 psi @ 250°F. Min. Pressure 10 psi @ 100°F. 133" O.D. x 65'7" long. Nozzles: (5) 2"; (4) 3"; (1) 4"; (2) 6"; and 24" Man-way on top. Tank mounted on 2 Saddles w/ four stiffening rings in between. Equipped w/ lifting lugs on each end. Serial # 400225. National Board # 4301. Year Built 1988. Estimated Weight 56,758#. Tank equiped w/ magnatex magnetic drive pump (P 9505) model # MXP 8520-S, size 3X2X8, 304L S/S, 150 GPM @ 56.2 Ft. Heat, 8.19 dia. impellers, 5HP @1750 RPM XP motor.



15,000 Gallon Horizontal S/S Pressure Tank - #3285

15,000 Gallon Struthers Ind. 304L Stainless Steel Horizontal Storage Tank. Max. Pressure F.V. & 100 psi @ 250°F. Min. Pressure 10 psi @ 100°F. 133" O.D. x 20' long. 22,694 lbs dry weight. Nozzles: (3) 2"; (4) 3"; (1) 4"; (2) 6"; and 24" Man-way on top. The tank is 17'6" T/T, 20' O.A.L. tank is mounted on 2 Saddler w/ 1 stiffning ring and 2 lifting lugs. Equiped w/ magnetex magnetic drive pump (P 9514) model # MXP 8520-S, Serial # M-4364-14, size 3X2X8, 304L S/S, 150 GPM@41.2 Ft. Heat, 7.48 dia. impeller, 5HP @1750 RPM XP motor. Serial # 40028.

7,000 Gallon Horizontal S/S Storage Tank (Qty.2)- #3283



7,000 Gallon Struthers Ind. 304L Stainless Steel Horizontal Storage Tank. Max. Pressure F.V. & 100 psi @ 250°F. Min. Pressure 10 psi @ 100°F. 96.75" O.D. x 20' long. 12,375 lbs dry weight. Nozzles: (3) 2"; (4) 3"; (1) 4"; (2) 6"; and 24" Man-way on top. The tank is 16' T/T, 20' O.A.L. tank is mounted on 2 Saddler w/ 2 liffning rings in between. Equiped w/ 2 liffning lugs on each end. This tanks is equiped w/ magnetex magnetic drive pump (P 9512) model # MXP 8520-S, Serial # M-4364-12, size 3X2X8, 304L S/S, 100 GPM@66 Ft. Heat,

8.25 dia. impellers, 5HP @1750 RPM XP motor. Serial # 40025. National Board # 4283. Year Built 1988. Estimated Weight 12,375#.

3,000 Gallon Horizontal S/S Pressure Tank- #3286

3,000 Gallon Struthers Ind. 304L Stainless Steel Horizontal Storage Tank. Max. Pressure F.V. & 100 psi @ 250°F. 6' X 14' 6" T/T. Nozzles: (2) 6"; (2)2"; (1) 4"; (2) 3"; and 24" Man-way on top. Tank mounted on 2 Saddles. Serial # 40027. National Board # 4273. Year Built 1988.

(2) 2,500 Gallon Vertical S/S Tanks-part of scrubber system-#3287

2,500 Gallon 304L Stainless Steel Vertical Storage Tank. Construction 7' X 9' T/T with Flat Bottom and Dish Top. (Part of Scrubber System)

